

Pedestrian Signal Assist Device with LED(PSAD) “Safe Street Crossing for everyone”

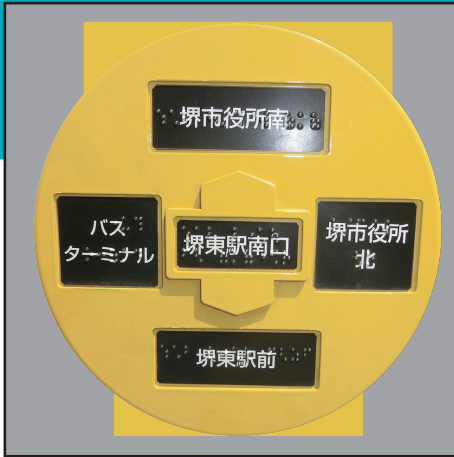


Our basic principles

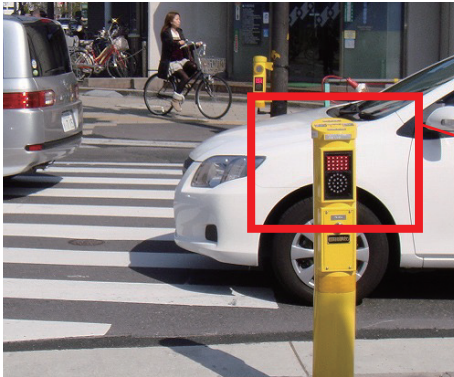
We will make a contribution to society by improving traffic safety with our Pedestrian Traffic Light Auxiliary Equipment which was developed in order to provide Safety for many different kind of people when crossing a street.



Universal Design



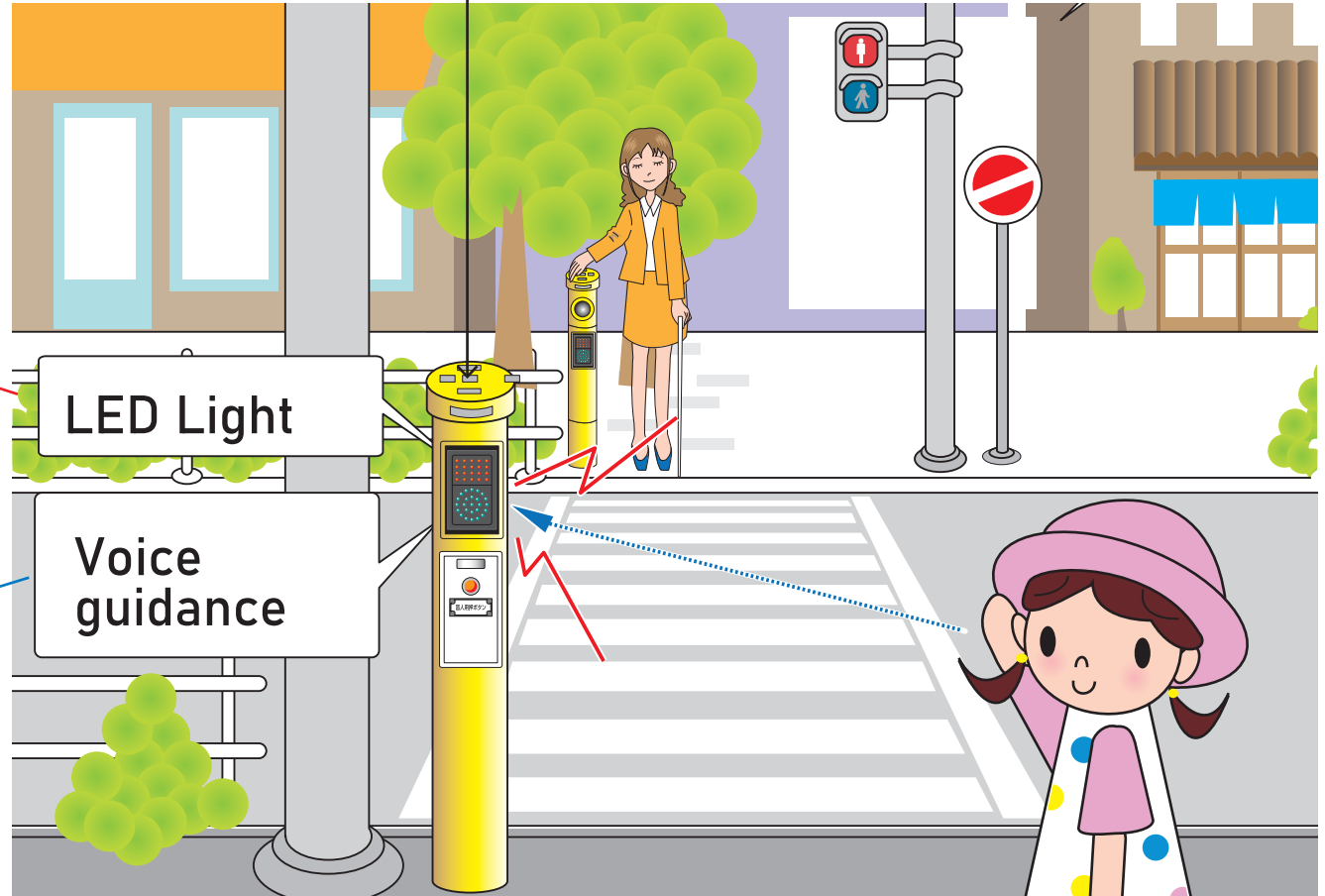
The head vibrates when the light turns Green. <Optional>



“Not to Walk” for Red Rectangle



“Walk” for Green Circle

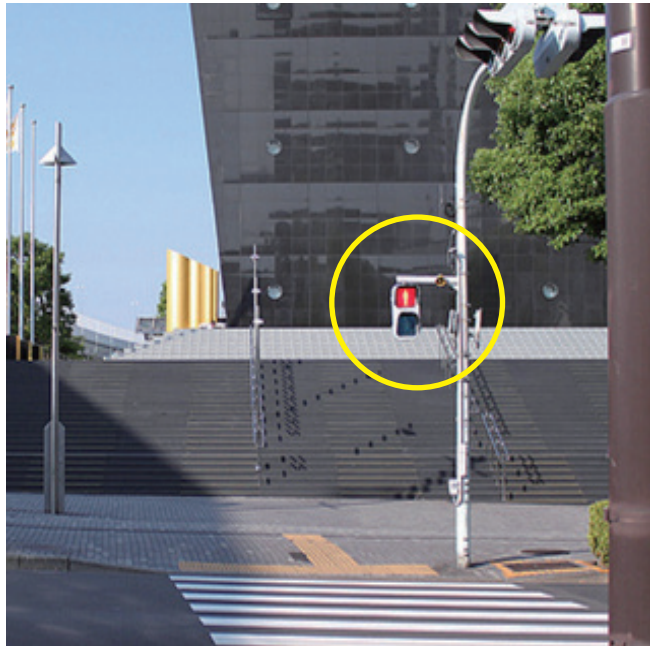


- Easy for everyone to utilize the traffic lights.
- Guiding Sound reach Pedestrian' s ear effectively

Issue No. 1: Pedestrian light Installation Position

Current Pedestrian Crosswalk

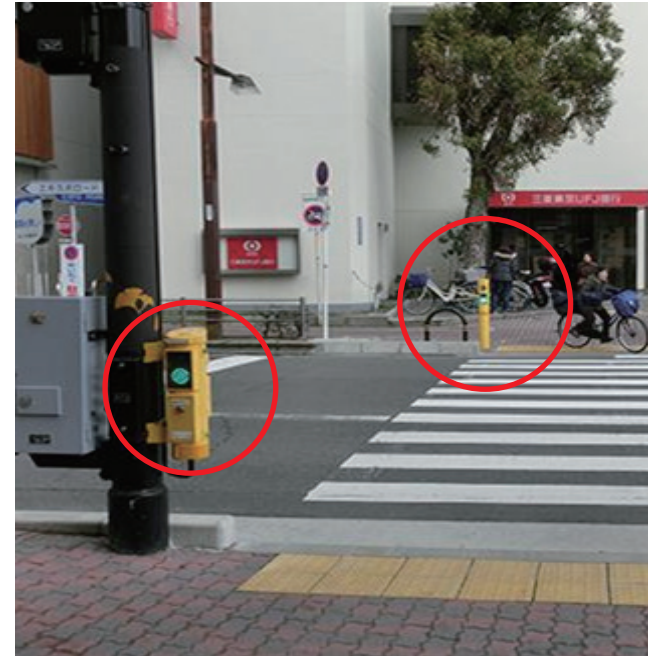
Pedestrian light is installed high on the other side of the road.



Difficult to utilize the traffic lights especially for Low vision, the Elderly and children due to the height.

PTL Auxiliary Equipment

Pedestrian light is installed on the same side where pedestrian is and the installation height is lower



Easy for everyone to utilize the traffic lights.

Research Data

Number of Traffic Accident before/after Pedestrian Traffic Light Auxiliary Equipment installation.

Installation Location: In front of Turumi Police Station (Osaka)

	Before installation			After installation		
	Year 2006	Year 2009	Year 2010	Year 2011	Year 2012	Year 2013
Vehicles	2 Accidents	5 Accidents	3 Accidents	No Accidents	No Accidents	1 Accidents
Pedestrians	1 Accidents	2 Accidents	1 Accidents	No Accidents	1 Accidents	No Accidents
Total	3 Accidents	7 Accidents	4 Accidents	No Accidents	1 Accidents	1 Accidents

Provided by Osaka Pref. Police Traffic Control

We will pursue usability for all pedestrians providing Safety.

Contact us

E:mail : inquiry@shinohara-elec.co.jp

SHINOHARA ELECTRIC CO.,LTD